



Roxtec ComSeal™

IP 55-konforme Kabelabdichtungen mit Aluminiumrahmen.

Die Roxtec ComSeal™ erfüllt die Anforderungen von IP 55 und ist in Rahmen aus pulverbeschichtetem Aluminium und AISI 316 Edelstahl erhältlich. Die Durchführung ist in sechs verschiedenen Größen für die Aufnahme von bis zu 32 Kabeln erhältlich.



- Beständig gegen Nagetierverbiss
- Korrosionsbeständig
- Leichtgewichtig
- Platzsparend

Produkteigenschaften



IP/UL NEMA

Aufbau der Installation



Schaltschränke und Gehäuse

Montagetyp



Verschrauben

Klassifizierungen und Zertifikate

Dichtigkeit

- IP 55, UL/NEMA 3,12,12K

Rahmenmaße

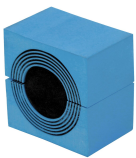
mm/kg

Die folgenden Rahmenvarianten zeigen eine begrenzte Auswahl. Das gesamte Angebot an Rahmen und Konfigurationen finden Sie unter [roxtec.com](https://www.roxtec.com).

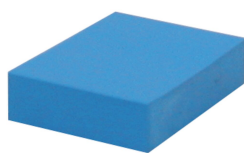
Title	Rahmenöffnungen	Belegraum	Außenabmessungen WxHxD	Öffnungsmaße w x h	Gewicht	Art. Nr.
COMSEAL 10 FRAME ASSEMBLY	1	40 x 100	80,5 x 173 x 55	56(+1/-1) x 149(+1/-1)	0,34	105300

Daten der Abdichtungskomponenten

Dichtkomponenten



Roxtec-Module CM mit Multidiameter™



Roxtec-Füll- und Ausgleichmodul CM



Roxtec-Montagegel

Weitere Informationen finden Sie unter www.roxtec.com.



Vorkonfigurierte Durchführungs-Kits

mm/kg



ComSeal 12/3



ComSeal 10/4



ComSeal 10/7



ComSeal 10/10



ComSeal 12/6



ComSeal 12/9



ComSeal 12/12



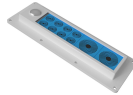
ComSeal 15/3



ComSeal 16/4



ComSeal 16/7



ComSeal 16/10



ComSeal 16/16



ComSeal 30/6



ComSeal 32/8



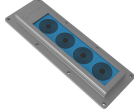
ComSeal 32/14



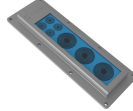
ComSeal 32/20



ComSeal 32/32



ComSeal 16/4 AISI316



ComSeal 16/7 AISI316



ComSeal 16/10 AISI316

Title	Konfiguration	Außenabmessungen WxHxD	Öffnungsmaße w x h	Gewicht	Art. Nr.
ComSeal 12/3	3x (9.5-32.5)	88 x 216 x 55	56(+1/-1) x 169(+1/-1)	0.8	105303
ComSeal 10/4	2x (9.5-32.5), 2x (3.5-16.5)	80.5 x 173 x 55	56(+1/-1) x 149(+1/-1)	0.6	105299
ComSeal 10/7	6x (3.5-16.5), 1x (9.5-32.5)	80.5 x 173 x 55	56(+1/-1) x 149(+1/-1)	0.6	105301
ComSeal 10/10	10x (3.5-16.5)	80.5 x 173 x 55	56(+1/-1) x 149(+1/-1)	0.6	105302
ComSeal 12/6	2x (9.5-32.5), 4x (3.5-16.5)	88 x 216 x 55	56(+1/-1) x 169(+1/-1)	0.8	105305
ComSeal 12/9	8x (3.5-16.5), 1x (9.5-32.5)	88 x 216 x 55	56(+1/-1) x 169(+1/-1)	0.8	105306
ComSeal 12/12	12x (3.5-16.5)	88 x 216 x 55	56(+1/-1) x 169(+1/-1)	0.8	105307
ComSeal 15/3	3x (28.0-44.0)	90.5 x 223 x 55	61(+1/-1) x 195(+1/-1)	0.9	105308
ComSeal 16/4	4x (9.5-32.5)	80.5 x 233 x 55	56(+1/-1) x 209(+1/-1)	0.8	105310
ComSeal 16/7	3x (9.5-32.5), 4x (3.5-16.5)	80.5 x 233 x 55	56(+1/-1) x 209(+1/-1)	0.8	105312
ComSeal 16/10	2x (9.5-32.5), 8x (3.5-16.5)	80.5 x 233 x 55	56(+1/-1) x 209(+1/-1)	0.8	105313
ComSeal 16/16	16x (3.5-16.5)	80.5 x 233 x 55	56(+1/-1) x 209(+1/-1)	0.8	105314
ComSeal 30/6	6x (28.0-44.0)	155 x 231 x 55	120(+1/-1) x 195(+1/-1)	1.6	105315
ComSeal 32/8	8x (9.5-32.5)	135 x 241 x 55	103(+1/-1) x 209(+1/-1)	1.4	105316
ComSeal 32/14	6x (9.5-32.5), 8x (3.5-16.5)	135 x 241 x 55	103(+1/-1) x 209(+1/-1)	1.4	105320
ComSeal 32/20	4x (9.5-32.5), 16x (3.5-16.5)	135 x 241 x 55	103(+1/-1) x 209(+1/-1)	1.4	105321
ComSeal 32/32	32x (3.5-16.5)	135 x 241 x 55	103(+1/-1) x 209(+1/-1)	1.4	105322
ComSeal 16/4 AISI316	4x (9.5-32.5)	81 x 233 x 33	58.5(+1/-1) x 211(+1/-1)	1.5	105679
ComSeal 16/7 AISI316	3x (9.5-32.5), 4x (3.5-16.5)	81 x 233 x 33	58.5(+1/-1) x 211(+1/-1)	1.5	105680
ComSeal 16/10 AISI316	2x (9.5-32.5), 8x (3.5-16.5)	81 x 233 x 33	58.5(+1/-1) x 211(+1/-1)	1.5	105681

The product information provided by Roxtec does not release the purchaser of the Roxtec system, or part thereof, from the obligation to independently determine the suitability of the products for the intended process, installation and/or use.

Roxtec gives no guarantee for the Roxtec system or any part thereof and assumes no liability for any loss or damage whatsoever, whether direct, indirect, consequential, loss of profit or otherwise, occurred or caused by the Roxtec systems or installations containing components not manufactured by an authorized manufacturer and/or occurred or caused by the use of the Roxtec system in a manner or for an application other than for which the Roxtec system was designed or intended.

Roxtec expressly excludes any implied warranties of merchantability and fitness for a particular purpose and all other express or implied representations and warranties provided by statute or common law. User determines suitability of the Roxtec system for intended use and assumes all risk and liability in connection therewith. In no event shall Roxtec be liable for indirect, consequential, punitive, special, exemplary or incidental damages or losses.

The Roxtec products are offered and sold in accordance with the conditions of the Roxtec General Terms of Sales. The latest version of the Roxtec General Terms of Sales can be downloaded from <https://www.roxtec.com/en/about-us/about-roxtec/general-terms-of-sales/>

We reserve the right to make changes to the product and technical information without further notice. Any errors in print or entry are no claims for indemnity. The content of this publication is the property of Roxtec International AB and is protected by copyright.

This document was generated on: 2024-04-18